

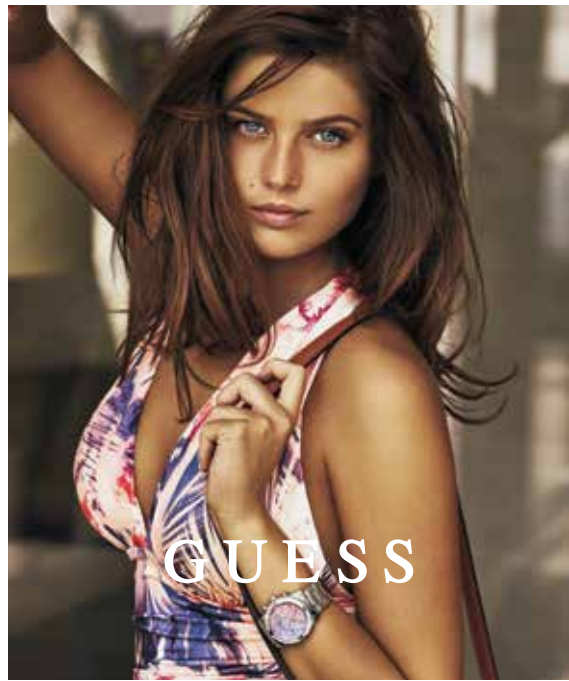


POP SUGAR

GUESS Watches creates a tasty combination that adds just the right sugar pop this season, making a flavorful splash.

Color-washed with dazzling brights, silver tones make a move with sorbet-style candy colors of bubble gum pink and berry blue, while unique ombre glitter dial treatments add sparkle in a way that feels effortless, fun and flirty. This style is sprinkled with confetti featured on this stainless steel case & bracelet, surrounded by a bevy of crystals. The all glitter dial transitions from pink to blue across the multi-function eyes, making our GUESS girl a standout.

With sorbet-style candy colors this style is also available in gold & rose gold tones making these styles effortless, fun and flirty. In quirky combinations, this candy crush is sure to prove more chic than sweet for the GUESS Girl.



ANNIE SANTO VICE PRESIDENT OF GLOBAL MARKETING
SEQUEL INTERNATIONAL
E asanto@sequel-us.com P 203 523 7298

VISIT GUESSWATCHES.COM/PRESS-CLUB FOR FURTHER INFORMATION

SEQUEL

Founded in 2007, Sequel AG, a Timex Group company, is headquartered in Zug, Switzerland with satellite offices in London, Paris, Hong Kong, Toronto, and Norwalk, Connecticut. Sequel AG is a member of the Federation of the Swiss Watch Industry FH. The 15-year licensing agreement gives Sequel AG the exclusive distribution rights for GUESS Watches worldwide. Sequel AG distributes GUESS Watches in over 100 countries worldwide through a network of 60 distributors and 20,000 retail outlets.