



SKY BLUE

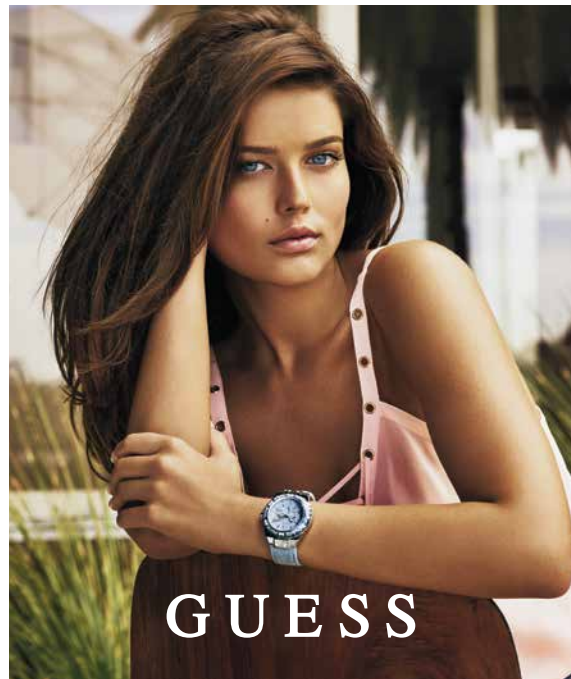
Fashion's horizons expand into lighter hues inspired by the summer sky.

Blues and bright whites come together to create the show-stopping styles of the season. This luminous look of GUESS Watches' newest pieces embraces the lighter side of the denim-friendly blue hue.

The color combination takes flight with a polished silver case encrusted with crystals and a light blue, textured multifunction dial. The complementing chambray glitter strap completes the look making this a must have accessory for Spring/Summer for every GUESS girl.

The blue streak continues with sport luxe styles featuring combinations of polished blue and white silicone with crystals radiating off the sunray white multifunction dials. Perfect for the girl on the go, these styles are subtle yet striking.

GUESS Watches presents a fashionable and restored take on boho chic in this luxurious collection of serene, sky blues and whites for a classic accompaniment every time.



ANNIE SANTO VICE PRESIDENT OF GLOBAL MARKETING
SEQUEL INTERNATIONAL
E asanto@sequel-us.com P 203 523 7298

VISIT GUESSWATCHES.COM/PRESS-CLUB FOR FURTHER INFORMATION

SEQUEL

Founded in 2007, Sequel AG, a Timex Group company, is headquartered in Zug, Switzerland with satellite offices in London, Paris, Hong Kong, Toronto, and Norwalk, Connecticut. Sequel AG is a member of the Federation of the Swiss Watch Industry FH. The 15-year licensing agreement gives Sequel AG the exclusive distribution rights for GUESS Watches worldwide. Sequel AG distributes GUESS Watches in over 100 countries worldwide through a network of 60 distributors and 20,000 retail outlets.